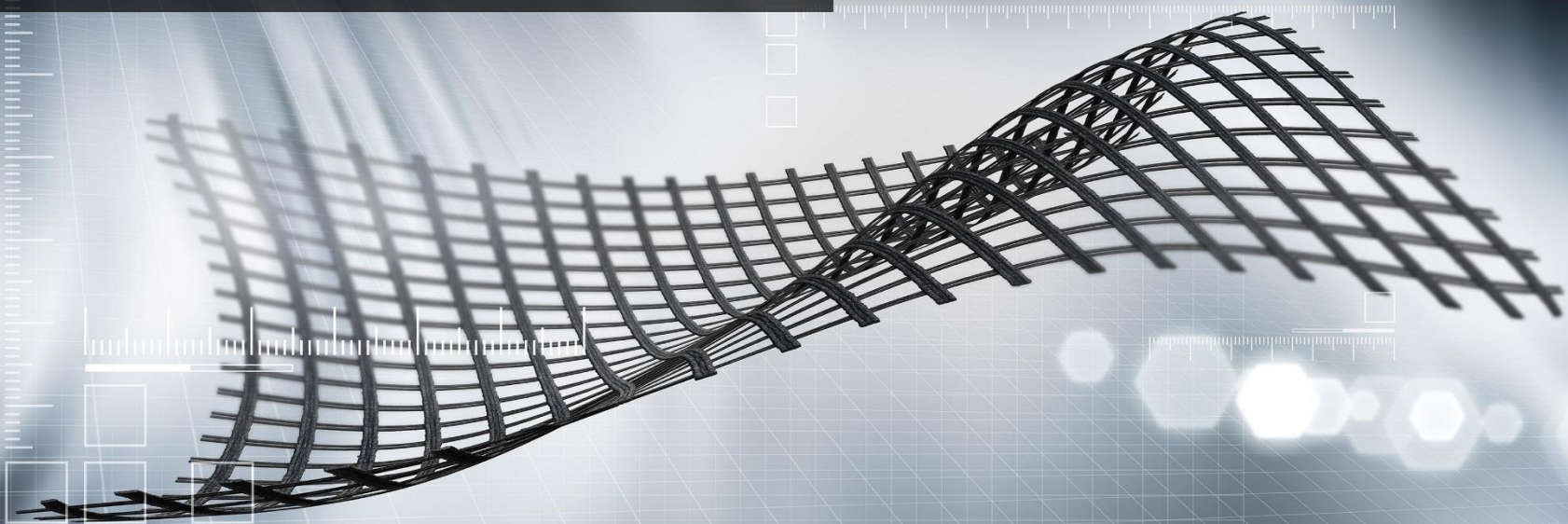


Huesker Synthetic An Introduction



Geotextiles

Geogrids

Geosynthetic Barrier

permeable

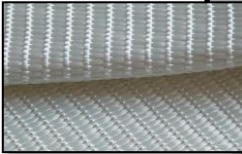
low permeable / impermeable



Non Woven



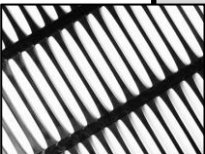
Woven



Woven /
Knitted

Welded

Extruded



Geomembranes

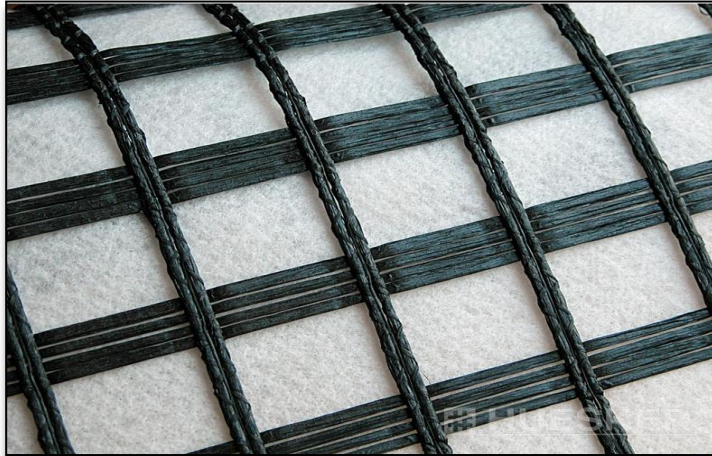


Geosynthetic
Clay Liners

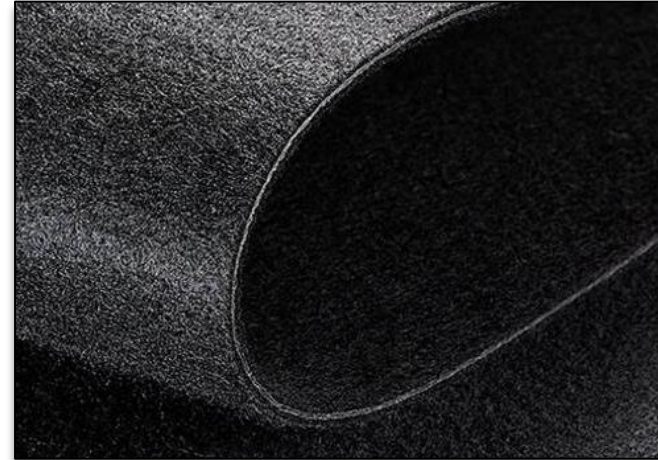
Composites

Special Products

Geogrids

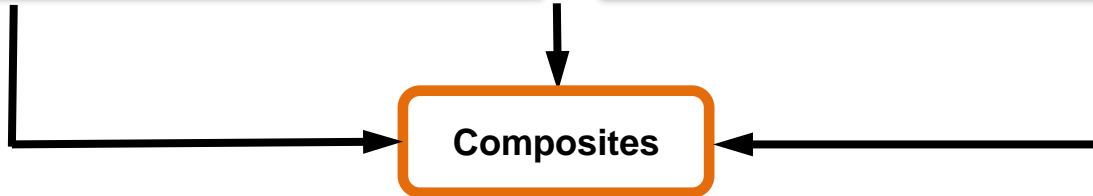


Geotextiles



Geosynthetic Barrier

Composites





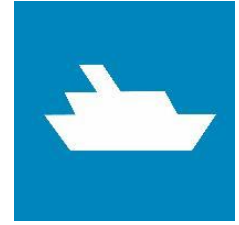
Roads and Pavements



Earthworks and Foundation



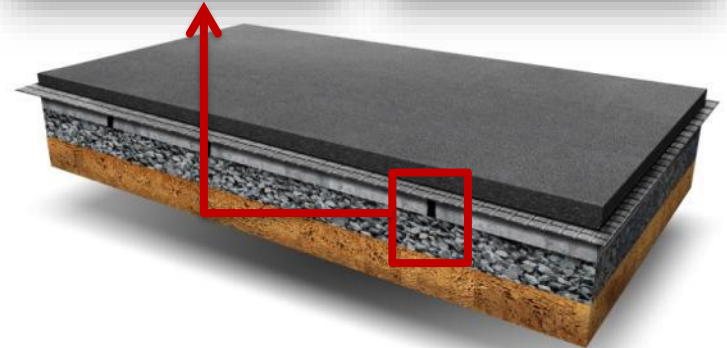
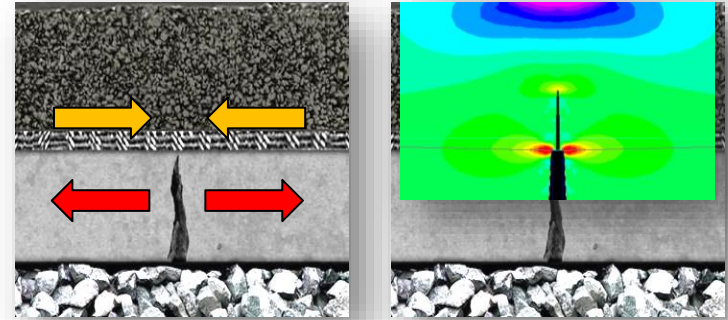
Environmental Engineering



Hydraulic Engineering

Reflective Cracking

- from existing base
- on carriageway widening schemes
- above the location of road excavation
- above expansion joints in concrete pavements
- from aging of bitumen (e.g. oxidation)



Absorption and distribution of high tensile stresses
Significantly reduced growth of reflective cracks

Sunshine Coast Council, QLD, Australia



Logan City Council, QLD, Australia



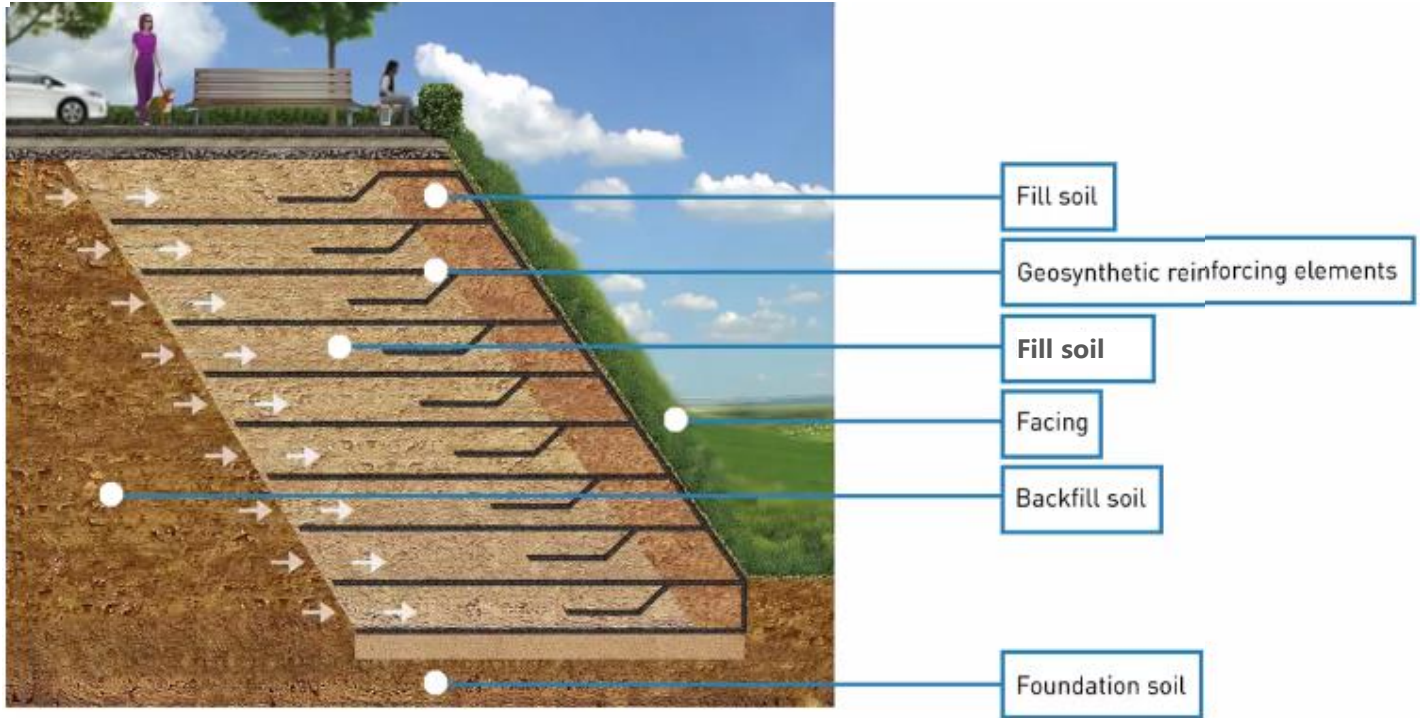


Geosynthetic Reinforced Soil

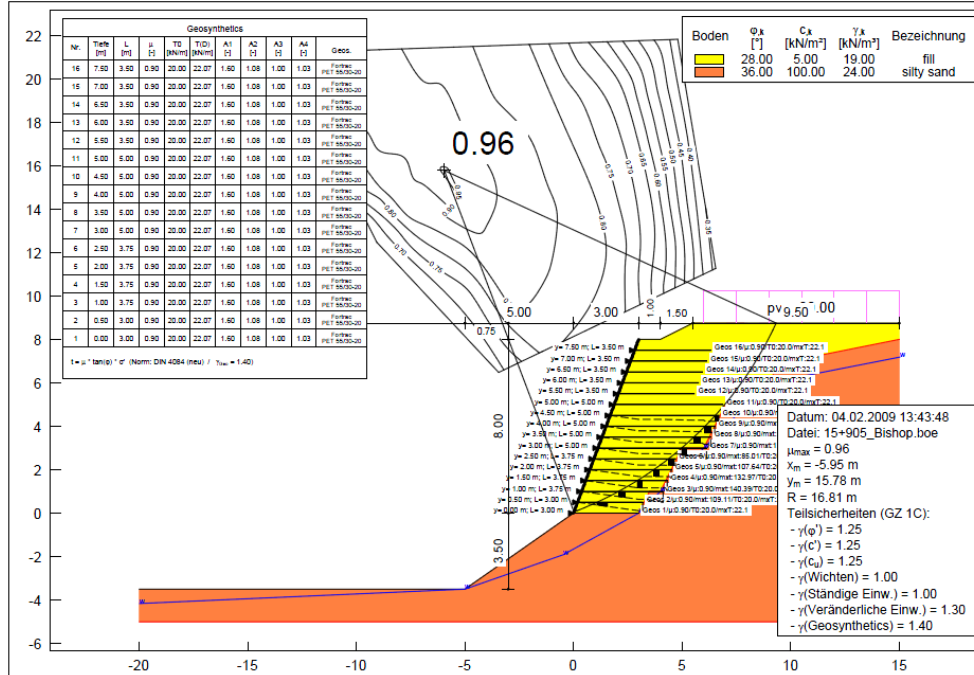
- # Steeper slopes
- # Flexibility in design
- # Rapid construction
- # Various landscaping options
- # Low - cost



Geosynthetic Reinforced Soil



Geotechnical Design (EBGEO Chapter 7)



PK 15+905.000
Bishop - Sliding Circles

Rwanda Ruehgeri - Gisengi Road
additional design calculation

Proj. No.: 09-023-1E-H-G
Enclosure: E 1

HUESKER

Die vorliegende Beratung bzw. Berechnung beruht auf den uns zur Verfügung gestellten Informationen und entspricht unseren besten Wissen. Bei ist systemische Haftungsansprüche können hieraus nicht abgeleitet werden.

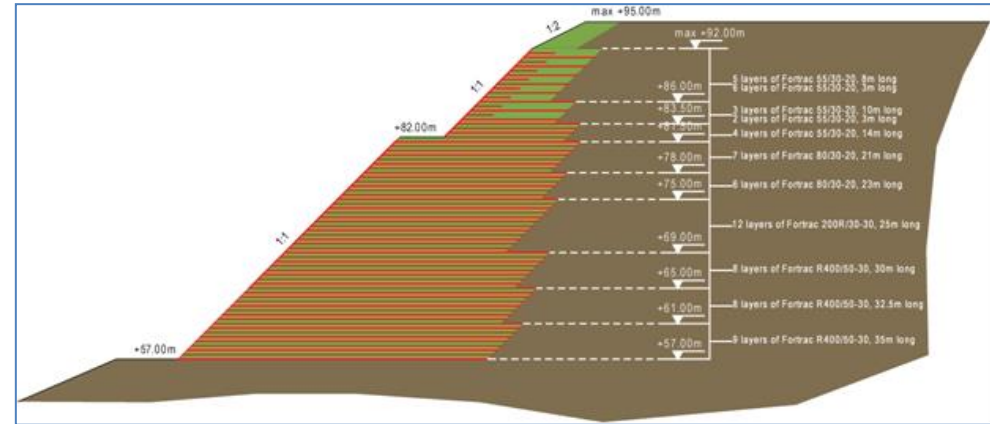
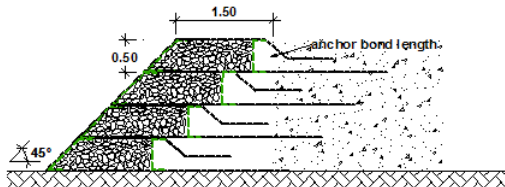
The advice contained herein is based on the information received and is bound to the best of our knowledge. It furnished free of charge. We undertake no liability for the results of its usage.

La propuesta de diseño que se ofrece en esta hoja se han basado en las hipótesis de cálculo recibidas en nuestro departamento técnico. Esta propuesta es gratuita y recoge nuestro mejor conocimiento. No asumimos ninguna responsabilidad ante el uso indebido de estos resultados.

Reinforced Soil Retaining Walls



Case Study: Midland Quarry, Nuneaton





Basal Reinforcement for Piled Embankments



Sinkholes



Geosynthetic Encased Columns



Basal Reinforcement



**Landfill
Construction**



**Groundwater
Protection**

**Remediation
(Industrial Wasteland)**



**Remediation
(Sludge Lagoon)**



Shin Lung Stream, Drainage canal, Taiwan



**Incomat Crib 10.200,
FP 60.148/20**

