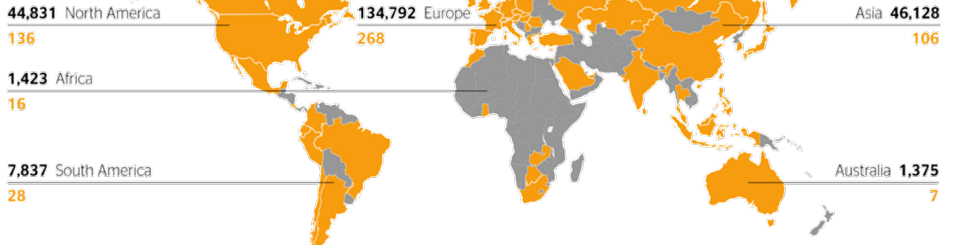




Continental AG, commonly known as Continental or colloquially as Conti is a German multinational automotive parts manufacturing company specializing in brake systems, interior electronics, automotive safety, powertrain and chassis components, tachographs, tires and other parts for the automotive and transportation industries. It is headquartered in Hanover, Lower Saxony. **Continental is the world's fourth-largest tire manufacturer.**



Annual sales → 42.57 Bil. USD
 Subsidiaries → 561 Worldwide
 Employees → > 232000



Continental develops pioneering technologies and services for sustainable and connected mobility of people and their goods. **Founded in 1871**, the technology company offers safe, efficient, intelligent and affordable solutions for vehicles, machines, traffic and transportation.

Continental's participating industries

- Agriculture & Forestry
- Aerospace
- Construction
- Energy
- Food & Beverages
- Home, Garden & Leisure
- Material Handling
- Mechanical & Plant Engineering
- Mining
- Industrial Safety
- Printing
- Rail Transport
- Ships, Ports & Sea
- Two Wheelers
- Commercial Vehicles
- Passenger Cars

Continental's 6 divisions

- Chassis and Safety
- Powertrain
- Interior
- Tires
- ContiTech
- ADAS (Advanced Driver Assistance Systems)



Parking Brake Control

The control is based on the cross-exchange concept, as described in the VDA guideline number 305-100. The Electronic Stability Control (ESC) system provides the hardware environment as a so-called "host," while the software module tailored to both the vehicle and the parking brake component, referred to as the PBC (Park Brake Control), controls and monitors the activation of the parking brake.

Continental Engineering Services /Highlights/

Vehicle access via smartphone and tablet. Thanks to modern networking, our access solutions do not need any classic keys. The system offers a completely new user experience and meets the needs of a future mobile society. The virtual key is from the backend of the OEM or the respective service provider, in corporate fleet and car sharing solutions, transferred to the driver's smartphone. Further communication between the vehicle and the mobile device takes place via Bluetooth and NFC.



Access Systems for Security and Convenience

CONTITECH

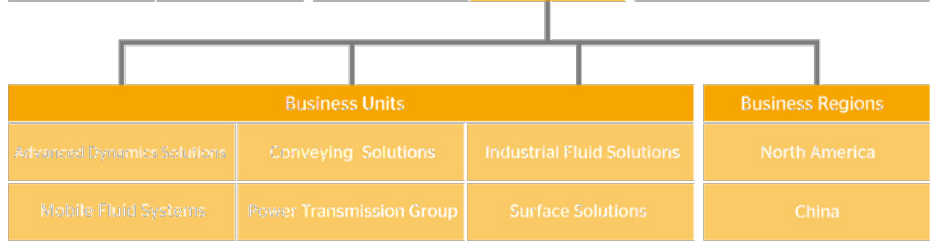
ContiTech uses its development and material expertise for products and systems made of rubber, polyamide, metal, textile, and electronic components to combine these with individual services. ContiTech also offers functional and design-oriented living solutions and is always searching for customer-friendly and environmentally-friendly answers – going well and truly beyond its roots as a producer of rubber products.



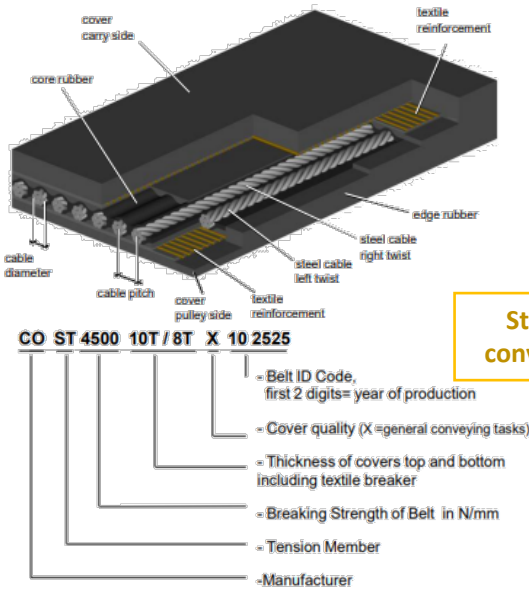
We operate in decentralized units with full profit responsibility forming an efficient network.

ContiTech is one of the world's leading industry specialists.

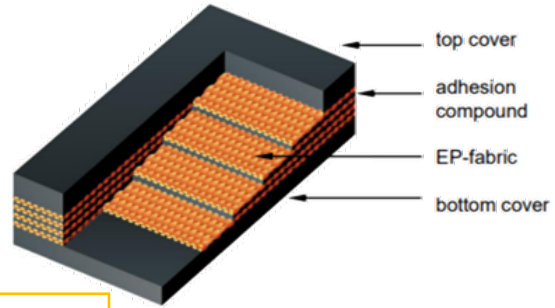
The Continental business area offers its customers connected, environment-friendly, safe and convenient industry and service solutions using a range of materials for off-highway applications, on rails and roads, in the air, under and above the ground, in industrial environments, for the food sector and the furniture industry. With around 43,000 employees in more than 40 countries and sales of some 5.6 billion euros (2020), the global industrial partner is active with core branches in Asia, Europe and North and South America.



Products

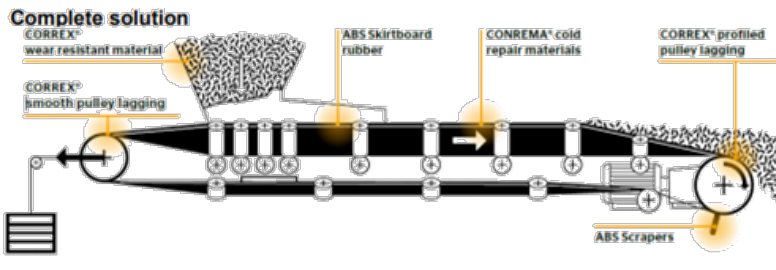


Steel cord conveyor belt



Textile conveyor belt

Service materials at a glance



Conventional	Preform
24 hours to splice using the old method.	18 hours to splice using preform.
	Preform splices offer 25% faster!



Pulley lagging 	Belt maintenance & repair 	Adhesives & solutions 	System protection 	Tool kits
---------------------------	--	--------------------------------------	------------------------------	----------------------

Benefits /Textile Conveyor Belts/

- Excellent fastener holding retention
- Excellent rip, tear and impact resistance
- High ultimate strength
- Reduced stretch
- Standard bias step splices
- Variety of cover compounds and cover gauges
- Variety of fabric carcasses
- Excellent adhesion values
- Superior abuse resistance
- Excellent surface finishes
- Good troughability
- Optimum tracking of belt on conveyor unit

Group	Product range
Wear protection	Correx smooth pulley lagging, ABS rubber sheets, scraper rubber, skirt board rubber
Force Transmission	Correx profiled pulley lagging
Belt Maintenance	Conrema Repair material – rubber and PU
Adhesive and Solutions	Conti Secur product range
Tools and Equipment	Belt installation equipment, splice work tools